

- 1
- 2
- 3
- 4
- 5
- 6
- 7
- 8
- 9
- 10
- 11
- 12
- 13
- 14
- 15
- 16
- 17
- 18

**LEVER BODY**

Black-oxide steel.

**HANDLE**

Phenolic based (PF) Duroplast, black colour, glossy finish PLX. (see page 639).

**STANDARD EXECUTIONS**

Black-oxide steel clamping element and retaining screw. Steel return spring.  
 - Threaded hole.  
 - Threaded stud, length as shown in the table.

**FEATURES AND APPLICATIONS**

Particularly suitable when the lever turning angle is limited owing to lack of space.

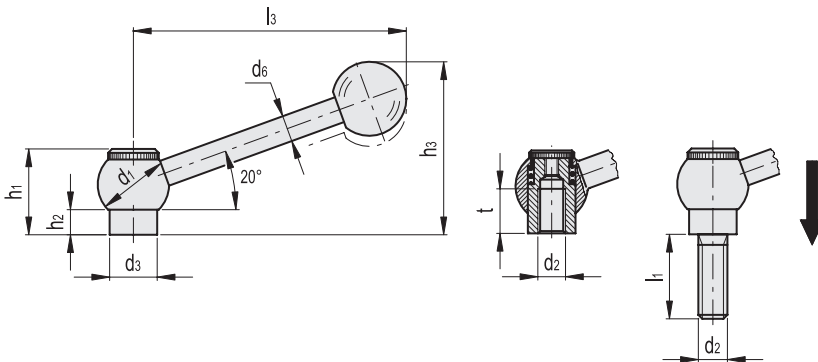
**SPECIAL EXECUTIONS ON REQUEST**

- Different threadings and lengths.  
 - Straight arm.

**INSTRUCTIONS OF USE**

By pressing the lever, teeth are disengaged and the handle can be placed in the most suitable position for the operation. As it is released, the handle is automatically engaged.

If the lever cannot make a 360° rotation, the clamping element can be easily screwed by means of the knurled screw (after having disengaged the lever).



Conversion Table	
1 mm = 0.039 inch	
d1	
mm	inch
20	0.79
25	0.98
28	1.10

METRIC

Code	Description	d1	d2	d3	d6	h1	h2	h3	l1	l3	tmin	⚖️
GN.10502	GN 6337.3-20-M8-N	20	M8	13.5	8.5	25	8	46	70	12	58	
GN.10512	GN 6337.3-25-M10-N	25	M10	16	11	29	8	58	87	15	111	
GN.10522	GN 6337.3-28-M12-N	28	M12	19	13	33.5	10.5	70.5	109	18	183	

Code	Description	d1	d2	d3	d6	h1	h2	h3	l1	l3	⚖️
GN.10601	GN 6337.3-20-M8-20-N	20	M8	13.5	8.5	25	8	46	20	70	69
GN.10602	GN 6337.3-20-M8-25-N	20	M8	13.5	8.5	25	8	46	25	70	70
GN.10603	GN 6337.3-20-M8-32-N	20	M8	13.5	8.5	25	8	46	32	70	73
GN.10613	GN 6337.3-25-M10-32-N	25	M10	16	11	29	8	58	32	87	136
GN.10614	GN 6337.3-25-M10-40-N	25	M10	16	11	29	8	58	40	87	138
GN.10615	GN 6337.3-25-M10-50-N	25	M10	16	11	29	8	58	50	87	144
GN.10616	GN 6337.3-25-M10-63-N	25	M10	16	11	29	8	58	63	87	151
GN.10622	GN 6337.3-28-M12-32-N	28	M12	19	13	33.5	10.5	70.5	32	109	222
GN.10623	GN 6337.3-28-M12-40-N	28	M12	19	13	33.5	10.5	70.5	40	109	228
GN.10624	GN 6337.3-28-M12-50-N	28	M12	19	13	33.5	10.5	70.5	50	109	235
GN.10625	GN 6337.3-28-M12-63-N	28	M12	19	13	33.5	10.5	70.5	63	109	243

Clamping levers